



Robert E. Lee & Associates, Inc.

Engineering, Surveying, Environmental Services

September 23, 2009

OAK CREEK SEWER AND WATER UTILITY
MILWAUKEE COUNTY, WISCONSIN

ADDENDUM NO. 4
PUETZ ROAD BOOSTER STATION

PART A- BOOSTER STATION CONSTRUCTION
PART B- TRANSMISSION MAIN CONSTRUCTION

PROJECT NOS. 08101 AND 08102

Green Bay Office
4884 Golden Pond Park Ct.
Neboart, WI 54155
920-662-9641
FAX 920-662-9141
E Mail rel@releinc.com

TO: PROSPECTIVE BIDDERS FOR PROJECT NOS. 08101 & 08102

RE: PUETZ ROAD BOOSTER STATION

Notice is hereby given that the contract documents for the above-referenced project are amended as hereinafter set forth:

PLANS

1. Plan Sheet 33, Drawing 100-H-01, **remove** and **replace** with the revised plan sheet.

This addendum shall be attached to and form a part of these contract documents. The receipt and examination of this addendum and inclusion as a part of the contract documents shall be acknowledged by the bidder in the space provided in the Bid Form on page 00410-1.

Sincerely,

ROBERT E. LEE & ASSOCIATES, INC.

Dale A. Marsh, P.E.
Senior Project Manager

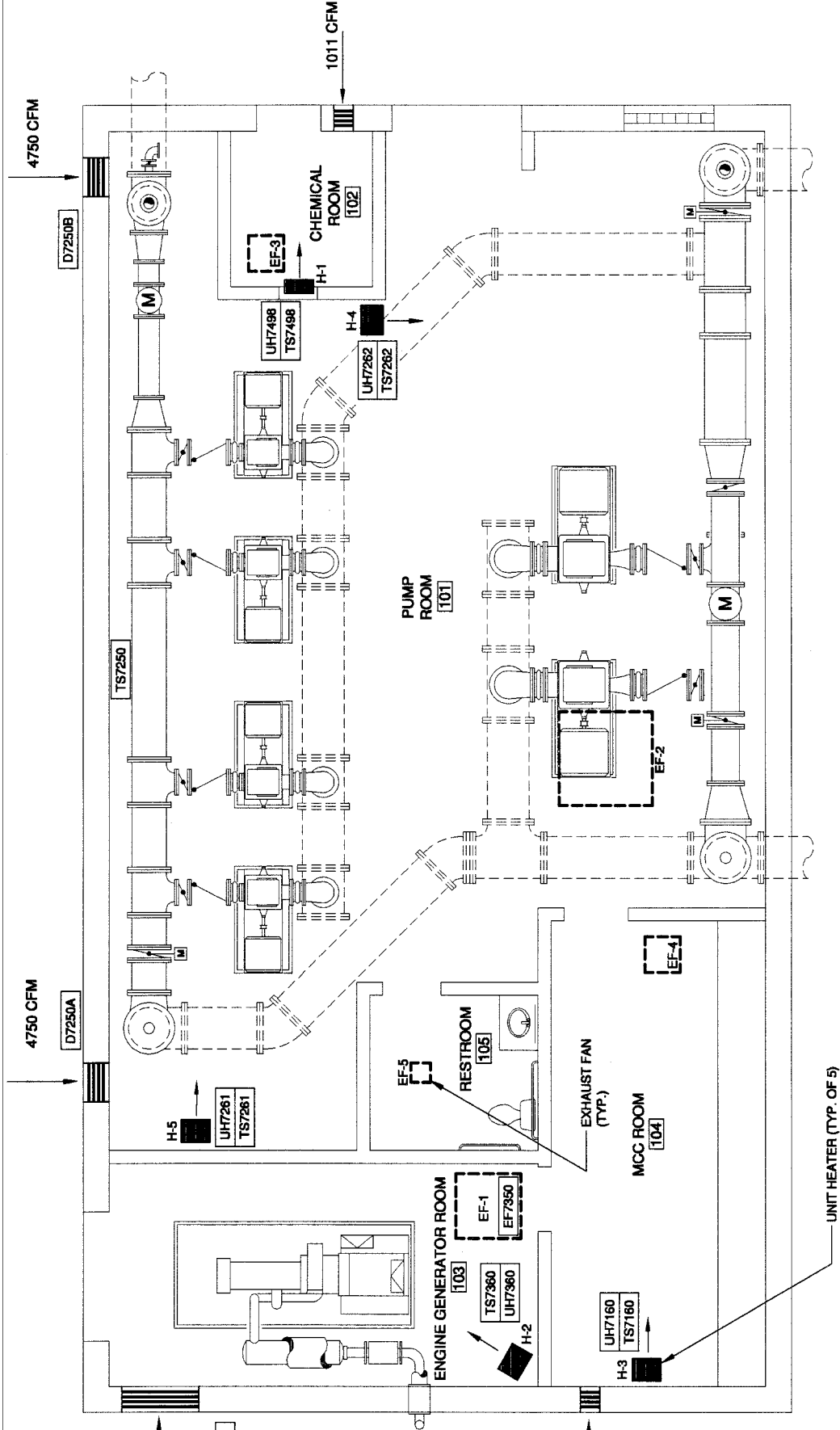
DAM/LAF

ENC.

Accepted this _____ day of _____, 2009.

Signature

Name of Firm



HVAC PLAN
SCALE: 1/4" = 1'-0"

ELECTRIC UNIT HEATERS

UNIT NO.	SERVICE	TYPE	CAP KW	AIR VOL. CFM	MOTOR WATTS	INTEGRAL STAT	MANUF. MODEL
H-2	GENERATOR RM	HORIZ.	5	270	6.00	NO (1)	BERKO HUH-520SA
H-3	MCC ROOM	HORIZ.	5	270	6.0	NO (1)	BERKO HUH-520SA
H-4/5	PUMP ROOM	HORIZ.	5	270	6.0	NO (1)	BERKO HUH-520SA

(1) EXTERNAL THERMOSTAT KIT

ELECTRIC WALL HEATERS

UNIT NO.	SERVICE	W	H	D	CAP. WATTS	CAP. BTU	RECESS	INTEGRAL STAT	MANUF. MODEL
H-1	CHEMICAL	15 25/32"	19 3/16"	3 3/4"	3000	10,239	YES	YES	BERKO FRA-4024

CEILING EXHAUST FANS

UNIT NO.	SERVICE	CFM OF STD. AIR	TYPE	MAX SONES	MOTOR RPM	MANUF. MODEL
EF-1	ENGINE GEN. ROOM	7640	CEILING	12.20	530	GREENHECK GB-300-10
EF-2	PUMP ROOM	9500	CEILING	7.60	225	GREENHECK GB-480-7
EF-3	CHEMICAL ROOM	1011	CEILING	6	860	GREENHECK G-131-C
EF-4	MCC ROOM	1304	CEILING	9.40	1140	GREENHECK GB-131-B
EF-5	RESTROOM	100	CEILING	4	2.20	GREENHECK SP-200

SA.	ST.	W.	G.	E.	T.	L.	TS.	PP.
<p>Consultant: Robert E. Lee & Associates, Inc. ENGINEERING, SURVEYING, AND ENVIRONMENTAL SERVICES 484 GOLDEN POND PARK CT. HOBART, WISCONSIN 54155 PHONE: 920-824-4411 WWW.RELEEC.COM</p>								
<p>CITY OF OAK CREEK, WISCONSIN HVAC PLAN IN: PUETZ ROAD BOOSTER STATION</p>								
DESIGNED BY			DRAWN BY			CHECKED BY		
D.A.M.			R.L.B.			K.A.K.		
8/13/09			8/13/09			8/13/09		
APPROVED BY								
UTILITY ENGINEER			APPROVED BY			DATE		
CITY ENGINEER								
SCALE								
PLAN								
HOR. N.T.S.								
PROFILE								
HOR. N.T.S.								
VER. N.T.S.								
SHEET								
33								
OF								
53								
100-H-01								
REVISION BY								
DATE								
FILE NO: 08101								