



September 18, 2009

**Green Bay Office**  
4664 Golden Pond Park Ct.  
Hobart, WI 54155  
920-662-9641  
FAX 920-662-9141  
E Mail rel@releeinc.com

**OAK CREEK SEWER AND WATER UTILITY  
MILWAUKEE COUNTY, WISCONSIN**

**ADDENDUM NO. 2  
PUETZ ROAD BOOSTER STATION**

**PART A- BOOSTER STATION CONSTRUCTION  
PART B- TRANSMISSION MAIN CONSTRUCTION**

**PROJECT NOS. 08101 AND 08102**

**TO: PROSPECTIVE BIDDERS FOR PROJECT NOS. 08101 & 08102**

**RE: PUETZ ROAD BOOSTER STATION**

---

Notice is hereby given that the contract documents for the above-referenced project are amended as hereinafter set forth:

**SPECIFICATIONS**

1. Section 00800RD, Supplementary Conditions, page 00800RD-5, Section SC-14.07.A.2.(i), **delete** in its entirety.
2. Section 00800RD, Supplementary Conditions, page 00800RD-5, Section SC-17.06, **delete** in its entirety.
3. Section 04200, Unit Masonry, **to clarify**, brick shall match existing ground storage reservoir color and style.
4. Section 16920, Instrumentation Devices, page 16920-2, Part 1.04, Design Requirements, **to clarify**, L2 is referenced on Sheet 32, Drawing 100-E-03, Note 5.

September 18, 2009  
Addendum No. 2  
OAK CREEK WATER AND SEWER UTILITY  
Puetz Road Booster Station  
Contracts 08101 and 08102  
Page 2

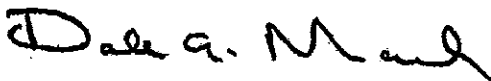
**PLANS**

1. Plan Sheet 13, Drawing 05-C-05, **remove and replace** with new enclosed plan sheet.
2. Plan Sheet 14, Drawing 05-E-01, **remove and replace** with new enclosed plan sheet.
3. **Add** enclosed new Plan Sheet 44.1, Drawing 200-AS-07.
4. Plan Sheet 31, Drawing 100-E-02, Note 14, **delete** turn exhaust upward beyond roof line and extend up above soffit. Provide weather cap.
5. Plan Sheet 32, Drawing 100-E-03, **change** tag numbers XS-9-1, XS-9-2, and XS-9-3 wiring type to 12VDC discrete signal.
6. Plan Sheet 40, Drawing 200-AS-02, Detail D, **change** limestone sill to precast sill.

This addendum shall be attached to and form a part of these contract documents. The receipt and examination of this addendum and inclusion as a part of the contract documents shall be acknowledged by the bidder in the space provided in the Bid Form on page 00410-1.

Sincerely,

ROBERT E. LEE & ASSOCIATES, INC.



Dale A. Marsh, P.E.  
Senior Project Manager

DAM/KAK/LAF

ENC.

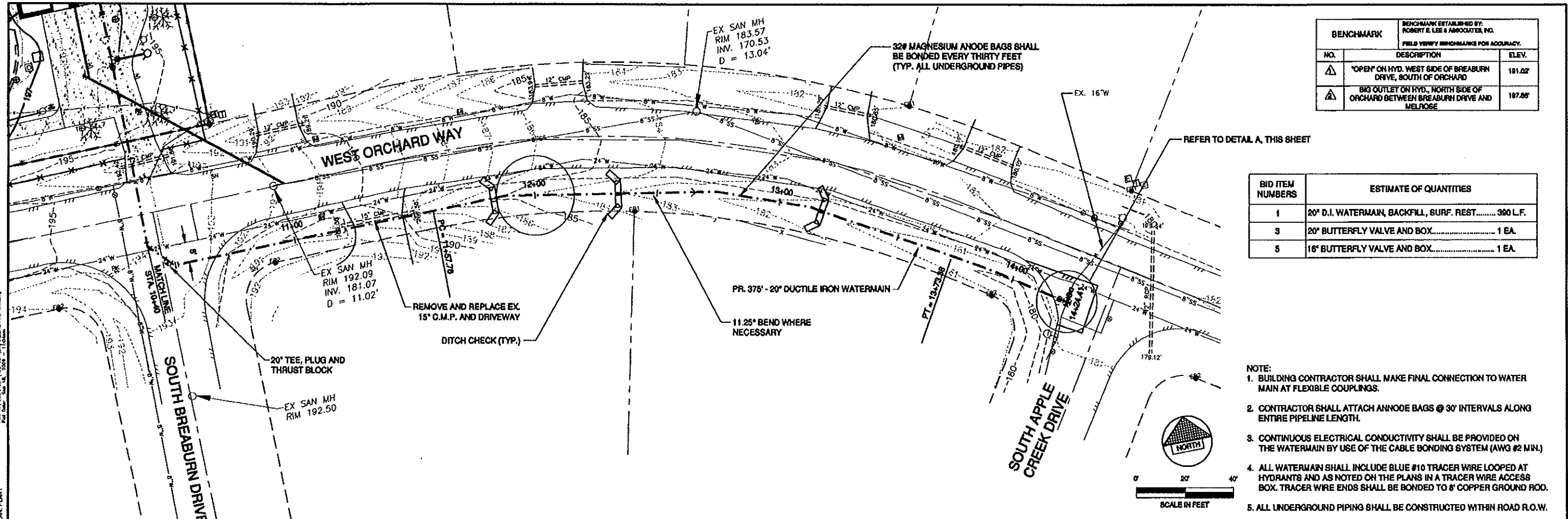
Accepted this \_\_\_\_\_ day of \_\_\_\_\_, 2009.



Kimberly A. Kimmes  
Project Manager

\_\_\_\_\_  
Signature

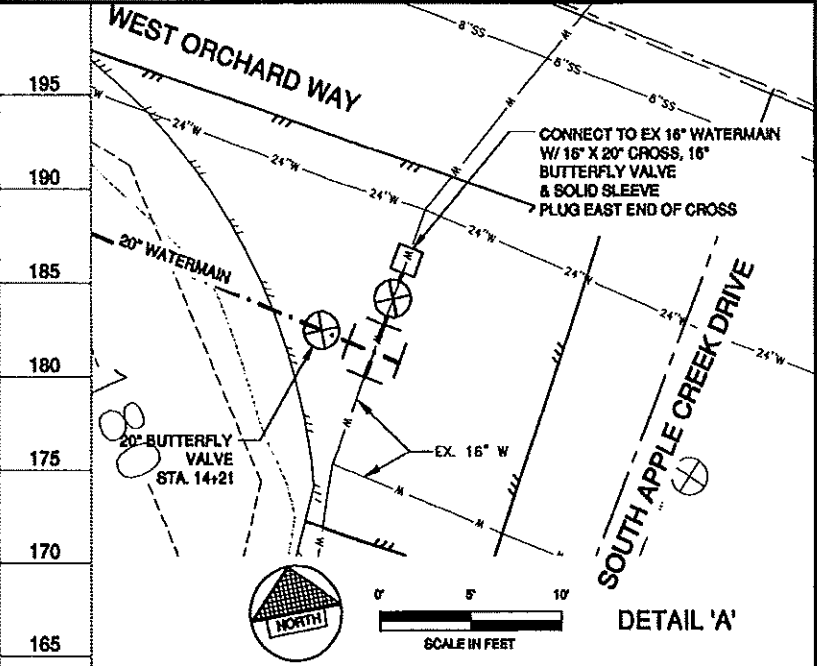
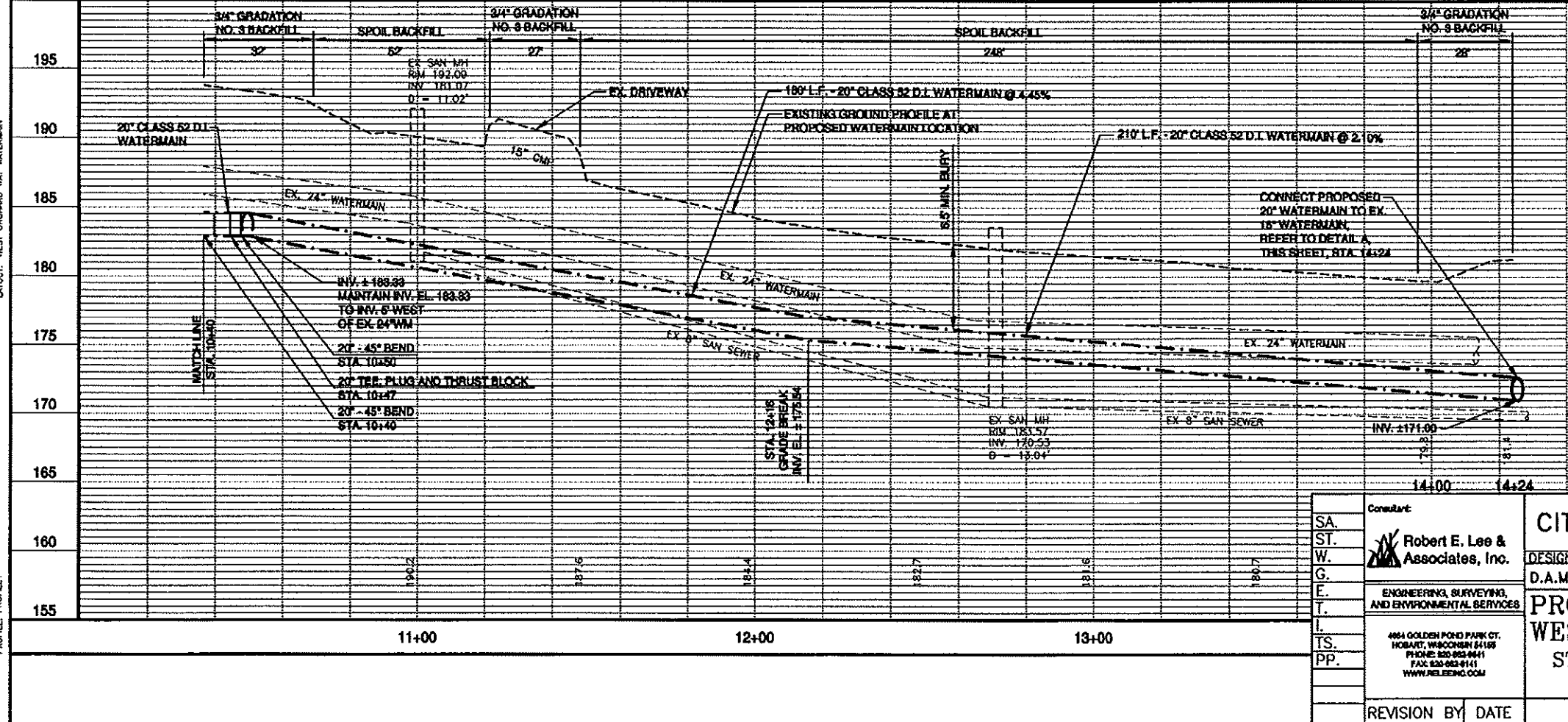
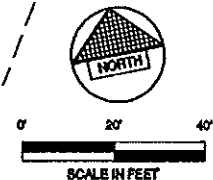
\_\_\_\_\_  
Name of Firm



BENCHMARK		BENCHMARK ESTABLISHED BY: ROBERT E. LEE & ASSOCIATES, INC. FIELD VERIFY BENCHMARKS FOR ACCURACY.
NO.	DESCRIPTION	ELEV.
△	*OPEN ON HYD. WEST SIDE OF BREABURN DRIVE, SOUTH OF ORCHARD	191.02
△	BIG OUTLET ON HYD., NORTH SIDE OF ORCHARD BETWEEN BREABURN DRIVE AND MELROSE	197.05

BID ITEM NUMBERS	ESTIMATE OF QUANTITIES
1	20" D.I. WATERMAIN, BACKFILL, SURF. REST..... 390 L.F.
3	20" BUTTERFLY VALVE AND BOX..... 1 EA.
5	16" BUTTERFLY VALVE AND BOX..... 1 EA.

- NOTE:
- BUILDING CONTRACTOR SHALL MAKE FINAL CONNECTION TO WATER MAIN AT FLEXIBLE COUPLINGS.
  - CONTRACTOR SHALL ATTACH ANNODE BAGS @ 30' INTERVALS ALONG ENTIRE PIPELINE LENGTH.
  - CONTINUOUS ELECTRICAL CONDUCTIVITY SHALL BE PROVIDED ON THE WATERMAIN BY USE OF THE CABLE BONDING SYSTEM (AWG #2 MIN.)
  - ALL WATERMAIN SHALL INCLUDE BLUE #10 TRACER WIRE LOOPED AT HYDRANTS AND AS NOTED ON THE PLANS IN A TRACER WIRE ACCESS BOX. TRACER WIRE ENDS SHALL BE BONDED TO 6" COPPER GROUND ROD.
  - ALL UNDERGROUND PIPING SHALL BE CONSTRUCTED WITHIN ROAD R.O.W.



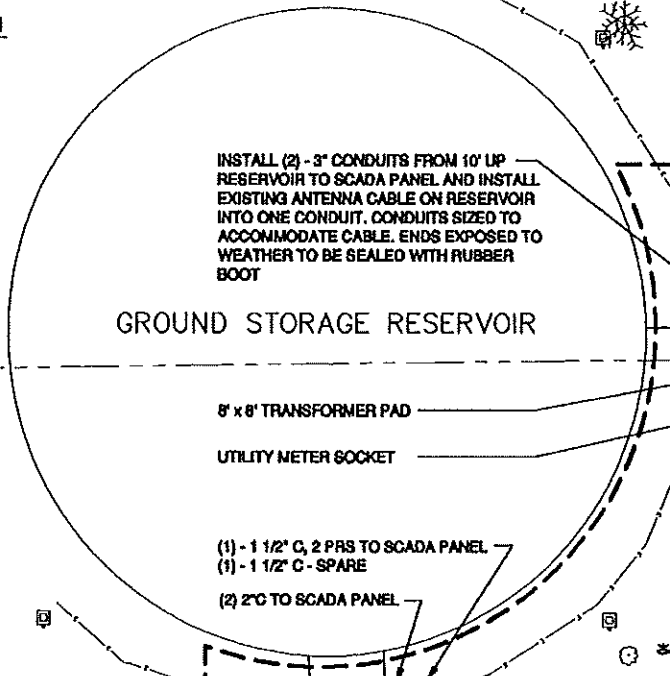
SA. ST. W. G. E. T. L. TS. PP.	CONSULTANT <b>Robert E. Lee &amp; Associates, Inc.</b> ENGINEERING, SURVEYING, AND ENVIRONMENTAL SERVICES 484 GOLDEN POND PARK CT. HOBAUT, WISCONSIN 53155 PHONE: 262-952-8441 FAX: 262-952-8441 WWW.RELEEC.COM	<b>CITY OF OAK CREEK, WISCONSIN</b> DESIGNED BY DATE DRAWN BY DATE CHECKED BY DATE D.A.M. 8/13/09 R.L.B. 8/13/09 K.A.K. 8/13/09	APPROVED BY _____ DATE _____ UTILITY ENGINEER APPROVED BY _____ DATE _____ CITY ENGINEER	
	REVISION BY DATE	FILE NO: 08101	SCALE SHEET PLAN 1"=20' HOR. 13 OF PROFILE 1"=20' HOR. 53 OF VER. 1"=5'	05-C-05
	PROPOSED WATERMAIN WEST ORCHARD WAY STA. 10+48 TO STA. 14+24		11+00 12+00 13+00	
	REVISION BY DATE FILE NO: 08101 05-C-05			



BENCHMARK		BENCHMARK ESTABLISHED BY: ROBERT E. LEE & ASSOCIATES, INC.
FIELD VERIFY BENCHMARKS FOR ACCURACY.		
NO.	DESCRIPTION	ELEV.
△	TOP NUT ON THE FIRE HYDRANT	194.61
△	TOP NUT ON THE FIRE HYDRANT	197.86
△	TOP NUT ON THE FIRE HYDRANT	191.02

OUTLOT 1  
CSM NO. 6111

OUTLOT 1  
CSM NO. 6112



PULL BOX

PUETZ ROAD RESERVOIR CONSTRUCTION LIMITS (TYP.)

(2) CAT 6 CABLES 2-12 PAIR POWER IN 3/4" C

RELOCATED LIGHT POLE WITH 2 SURVEILLANCE CAMERAS (NO LIGHT)

RELOCATED LIGHT POLE

EX SAN MH  
RIM 183.57  
INV. 170.53  
D = 13.04'

WEST ORCHARD WAY

EX SAN MH  
RIM 192.09  
INV. 181.07  
D = 11.02'

PULL BOX

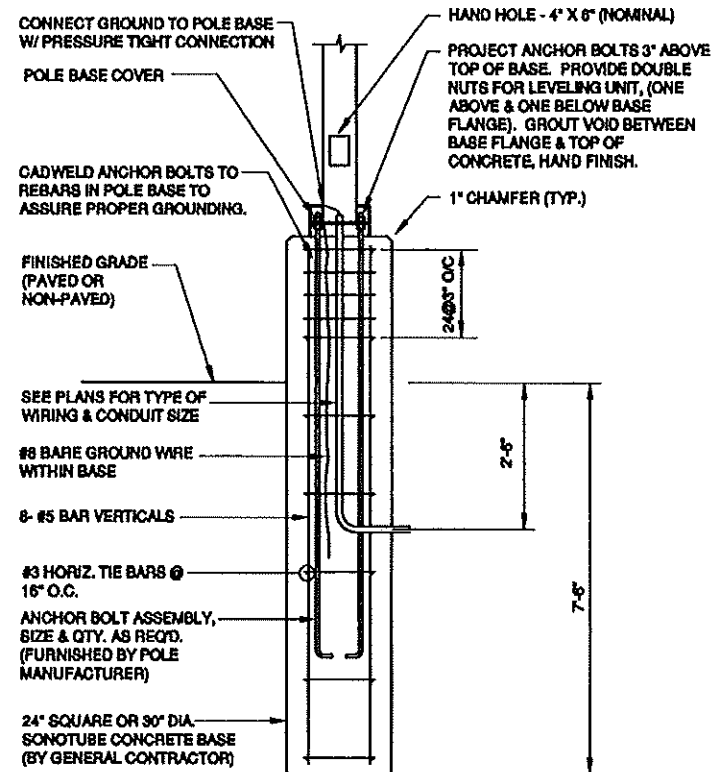
PROPOSED FLAGPOLES

RELOCATED GROUND LIGHT

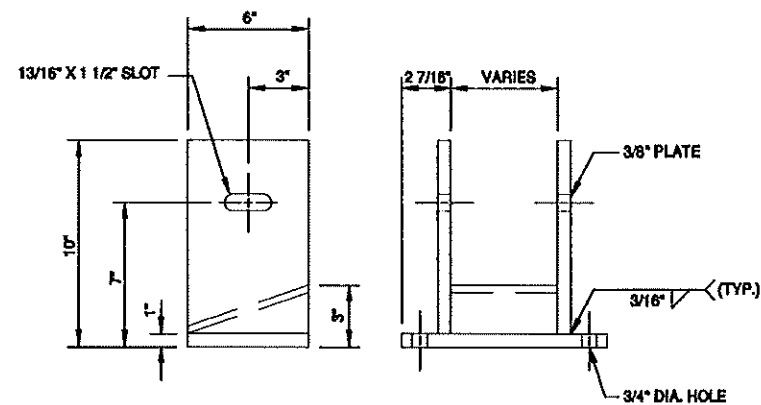
SOUTH BREABURN DRIVE

SA. ST. W. G. E. T. I. TS. PP.	Consultant: <b>Robert E. Lee &amp; Associates, Inc.</b> ENGINEERING, SURVEYING, AND ENVIRONMENTAL SERVICES 4841 GOLDEN POND PARK CT. HOBART, WISCONSIN 54158 PHONE: 920-882-8841 FAX: 920-882-8441 WWW.RLEAENG.COM	<b>CITY OF OAK CREEK, WISCONSIN</b> DESIGNED BY: D.A.M. DATE: 8/13/09 DRAWN BY: R.L.B. DATE: 8/13/09 CHECKED BY: K.A.K. DATE: 8/13/09	APPROVED BY: _____ DATE: _____ UTILITY ENGINEER APPROVED BY: _____ DATE: _____ CITY ENGINEER
	<b>ELECTRICAL SITE PLAN</b>  IN: PUETZ ROAD BOOSTER STATION		SCALE: 1"=20' PLAN HOR. N.T.S. PROFILE HOR. N.T.S. VER. N.T.S.
REVISION BY: _____ DATE: _____	FILE NO: 08101	05-E-01	

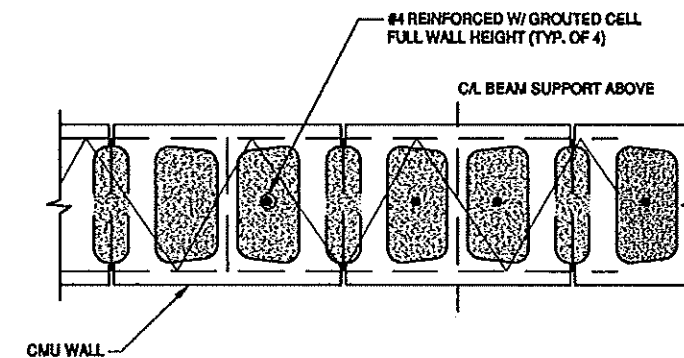
The RLEAENG logo is a registered trademark of Robert E. Lee & Associates, Inc. © 2009. All rights reserved.



OUTDOOR LIGHTING  
STANDARD BASE DETAIL



TYPICAL BEAM CONNECTOR



TYPICAL REINFORCED MASONRY

SA. ST. W. G. E. T. I. TS. PP.	Consultant	CITY OF OAK CREEK, WISCONSIN		APPROVED BY			
	Robert E. Lee & Associates, Inc.	DESIGNED BY	DATE	DRAWN BY	DATE	UTILITY ENGINEER	DATE
	ENGINEERING, SURVEYING, AND ENVIRONMENTAL SERVICES	D.A.M.	8/13/09	R.L.B.	8/13/09	K.A.K.	8/13/09
	484 GOLDEN POND PARK CT. HOLMDEL, WISCONSIN 53128 PHONE: 820-982-8841 FAX: 820-982-8111 WWW.RELEA.COM	MISCELLANEOUS DETAILS		CITY ENGINEER		DATE	
		IN: PUETZ ROAD BOOSTER STATION		SCALE	SHEET		
				PLAN	44.1		
				PROFILE	OF		
				VER.	53		
		REVISION BY	DATE	FILE NO: 08101		200-AS-07	